

NMR Support Web Site READ ME file

Step 1: Obtaining a login account

The first step in obtaining a copy of the Delta software online is to request a login account. Go to <http://nmrsupport.jeol.com/> and click on **Open A User Account**. You will also be asked to provide some demographic information before being prompted to register. Accounts will only be granted to potential users that supply complete and verifiable demographic information. Only one account per user is allowed on the NMR support web site. Please make sure the email address you supply is correct and functional.

You will receive an email confirming your request for registration. When we approve your account, you will receive an email notifying you that your account has been approved. At that point you will be able to login the NMR support web site, download the Delta Software package and request Delta License Keys. Note: it may take up to 72 hours to approve an account.

Step 2: Download and install Delta

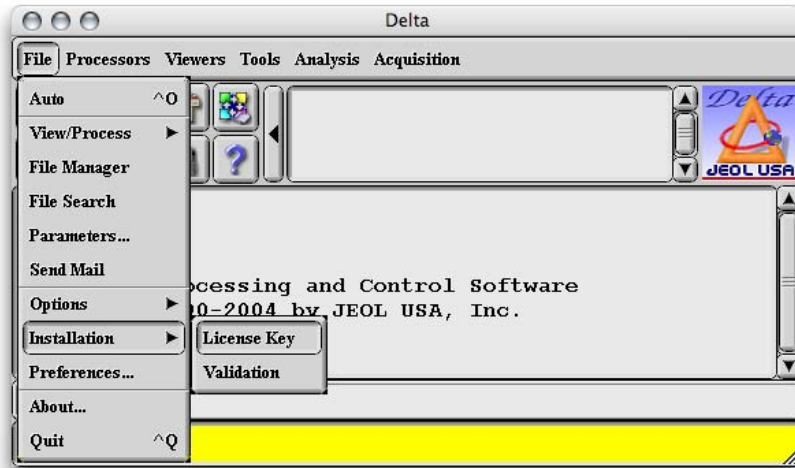
Click the **Software** tab and download the desired version(s). You will need to specify whether you want the WINDOWS XP™, MAC OSX™, LINUX, or other version. Installation instructions can be found in the FAQ section and in the download software kit. Please note Windows Vista is not supported at this time.

Step 3: Obtain and install a license key

Unlicensed versions of Delta will run for 15 minutes, to allow you to obtain the Delta machine ID, enter a Delta License Key or verify that Delta functions on your system. To obtain a Delta License Key log into the NMR support web site and click the **License Keys** tab. To obtain a Delta License Key for your workstation, you must supply the **Delta Machine ID** for your computer.

The **Delta Machine ID** is a unique 10 character alpha-numeric string generated from the network card on your computer. It is important to note that every computer will have a different Delta Machine ID. The system must have a configured and operating network connection for Delta to generate a valid Delta Machine ID. Please note also that Delta machine ID's do NOT contain the number zero.

Start up Delta and choose the following:



Choosing **LICENSE KEY** will give you the following window:



Provide the string given in the **MACHINE ID** field when requesting a license key. The Delta License Key will be displayed and sent to you by e-mail. Enter the key into the **LICENSE KEY** field and hit **SET KEY**. Note that you can enter numbers into this field by simply placing the mouse cursor over the intended box. Note that it will be unnecessary to obtain a new key when you update to a newer version of Delta.

Note: Local Keys are only available to the current user on the workstation, Global Keys are available to all users on the workstation, if the system is used by more than one user we recommend installing the Delta License Key Globally.

Note: The Delta License Key is operating system independent, therefore new Delta License Keys are not required when changing or upgrading the operating system.